



ELC-AQFS120-SQA



ELC-AQFS240-SQA



ELC-AQFS360-SQA

AQUAFUSION II ARGB

AQUAFUSION II **ARGB**



- Superior Cooling Capacity (310W/360W/380W TDP)
- Patented Dual-Chamber Water Block Design
- ENERMAX SquA RGB ADV Fan
- Supports AMD AM5 and Intel LGA 1851
- Magnetic Rotatable Real-time Status Digital Display

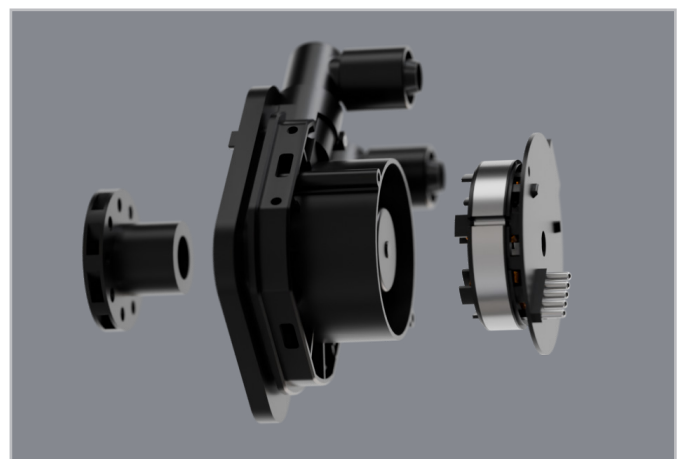


Features

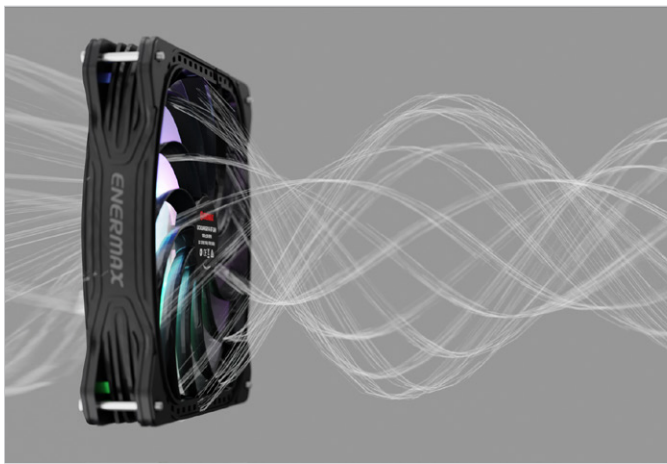
- Patented Dual-Chamber Water Block with ENERMAX Gen.2 Xtreme Pump Design
 - ENERMAX Gen.2 Xtreme Pump Technology is the newly designed water block. With the enlarged cooling base and improved pump lift and flow rate, it can deliver superior cooling capacity.
- ENERMAX SquA ADV Fans
 - With our Vortex Frame Technology and a downsized hub design, ENERMAX SquA ADV fans provide optimal cooling performance.
- Magnetic Rotatable Real-time Status Digital Display
 - Real-time monitoring of CPU and GPU temperatures and fan speeds, with software control and alarm settings.
 - Magnetic, 360-degree rotatable display design to meet all display needs.
- SYNC WITH MOTHERBOARD RGB SOFTWARE
 - AQUAFUSION II AIO cooler is designed to synchronize with addressable RGB motherboards (3 pin assignment is 5V/D/G), providing 16.8 million colors to light up your rigs
- Easy Installation
 - The fan is pre-installed on the radiator, making the installation process easier and significantly reducing assembly time.



Magnetic Rotatable Real-time Status Digital Display



Patented Dual-Chamber Water Block Design



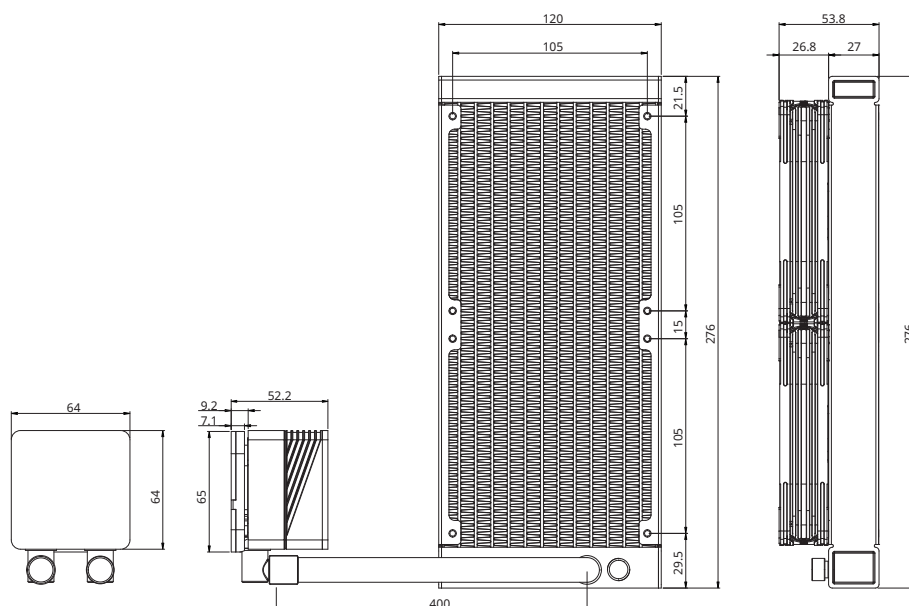
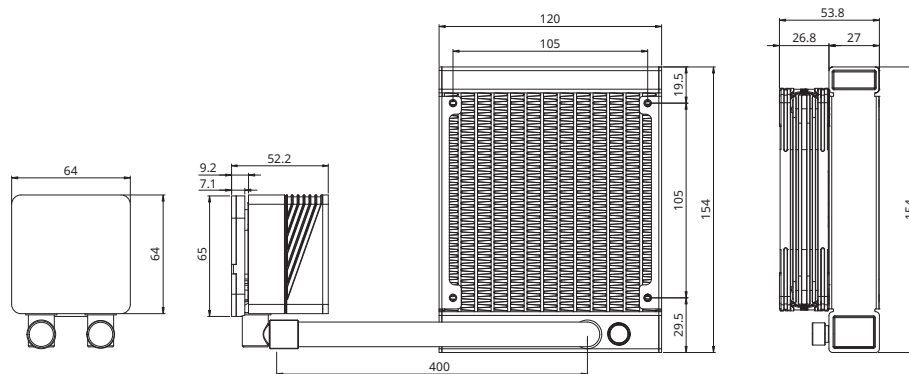
ENERMAX SquA RGB ADV Provides Optimal Cooling Performance

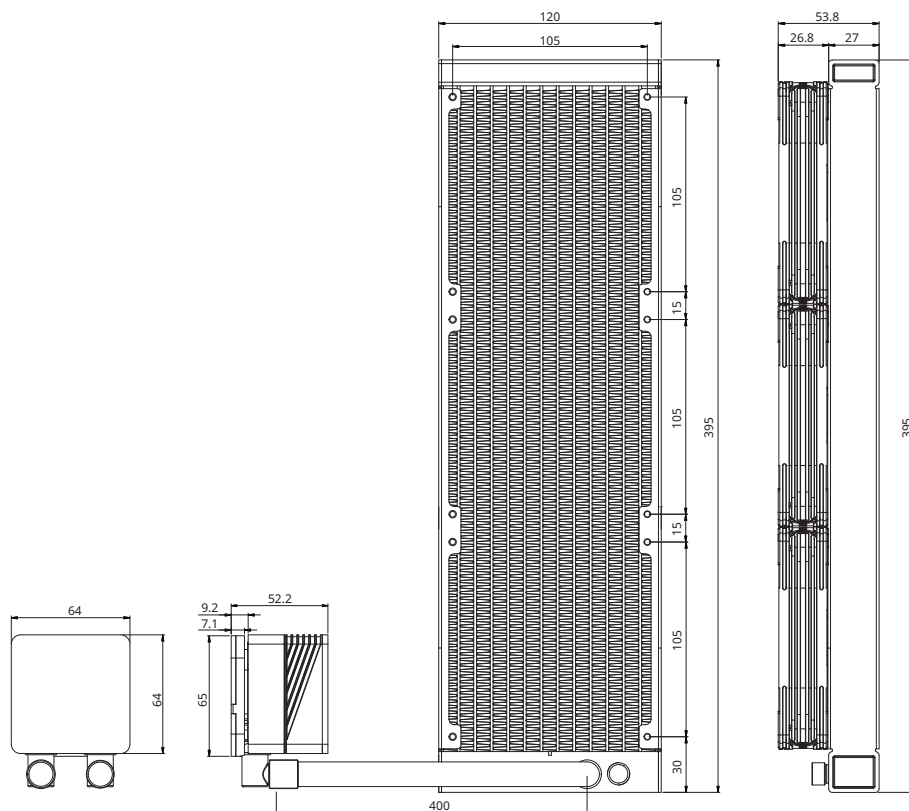


Motherboard Synchronization
Program preferred lighting effects via motherboard software

Dimension

unit : mm





Specifications

Model		ELC-AQFS120-SQA	ELC-AQFS240-SQA	ELC-AQFS360-SQA
CPU Socket		Intel® LGA 1851/1700/115x/2066 AMD® AM5/AM4		
Radiator Dimension		154 x 120 x 27mm	274 x 120 x 27 mm	394 x 120 x 27mm
Tube Length		400 mm		
Material	Cold Plate	Copper		
	Radiator	Aluminum		
	Tube	Rubber		
Water Block Pump	Speed	1500~3100 RPM ±10%		
	Bearing	Ceramic bearing		
	MTBF	100,000 hrs		
	Rated Voltage	12V		
Fan	Rated Current	0.35A		
	Dimension	120 x 120 x 26 mm		
	MTTF	≥ 100,000 hrs		
	Speed	500~1800 RPM ±10%		
	Rated Voltage	12V		
	Rated Current	0.25A		
	Rated Current -RGB LED	1.08A		
	Air Flow	71.88 CFM		
	Static Pressure	2.08 mmH2O		
	Noise Level	27.4 dBA		
Connector		8 Pin		
TDP		310W	360W	380W
Logistic information				
Barcode	EAN	4713157729293	4713157729309	4713157729316
	UPC	819315029299	819315029305	819315029312
Box Dimension		245 x 137 x 218 mm	306 x 147 x 232 mm	448 x 137 x 210 mm
Gross Weight / Unit		1.5 kg	1.97 kg	2.45 kg
Carton Dimension		510 x 455 x 320 mm	488 x 325 x 475 mm	467 x 292 x 450 mm
Q'ty / Carton		13.4 kg	13.05 kg	10.84 kg
Gross Weight / Carton		8 pcs	6 pcs	4 pcs