



NX500M ARGB

Mini Tower M-ATX Gaming Case



UNIQUE DESIGN & POWERFUL HEAT DISSIPATION

The NX500M ARGB features a unique design and excellent cooling performance. The half-view tempered glass side panel design allows you to show off your gaming configurations without any obstacles. 6 x 120mm fans can be installed simultaneously.



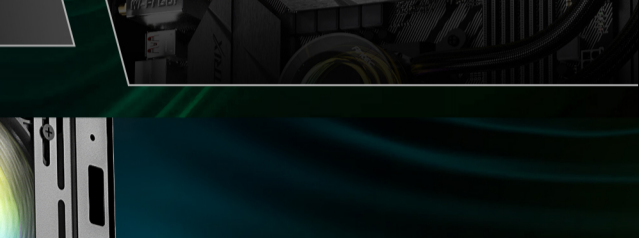
SLEEK DESIGN WITH MASSIVE AIR INTAKE

The sleek and elegant exterior design provides ample airflow to your system for maximum cooling while ensuring minimal dust intake. The panel comes equipped with a Type-C port for added convenience in use.



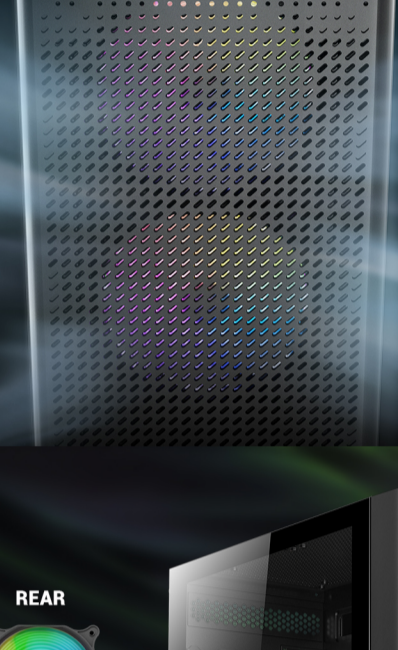
POWERFUL COOLING

Supports a 360mm (Length \leq 397mm) Radiator at the front and a 240mm radiator at the top.



POWERFUL FAN COMPATIBILITY

Supports 3 x 120mm fans at the front.



HIGH-AIRFLOW MESH FRONT PANEL

Massive air intake at the front provides ample airflow.



PRE-INSTALLED 3 X 120MM F12 R ARGB FANS

REAR
1 x 120 mm ARGB Fan

FRONT
2 x 120 mm ARGB Fans

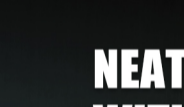
IN SYNC WITH MOTHERBOARD FOR ARGB LIGHTING

Use the main case fan to daisy-chain with the other two fans for ARGB sync and create your personal style.



I/O PANEL

Power, Reset, Type-C 3.2 Gen 2 x 1, USB3.0 x 1, USB2.0 x 2, MIC/HD-AUDIO



Type-C 3.2 Gen 2



NEAT BUILD WITHIN REACH

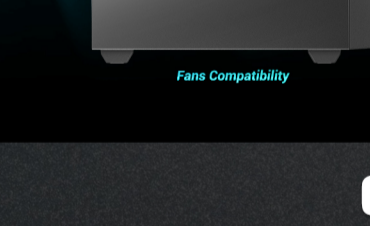
20mm space for cable management ensures your PC build looks neat.

TEMPERED GLASS SIDE PANEL

Showcase your personalized hardware and custom water-cooling system.



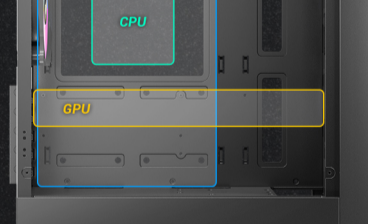
UP TO 6 X 120MM FANS SIMULTANEOUSLY



COMPATIBILITY

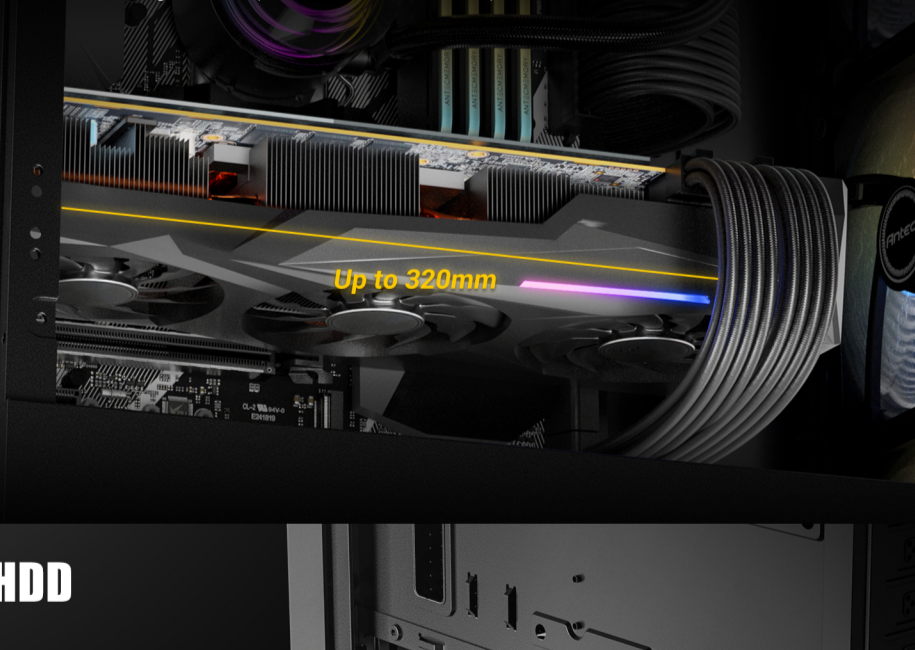
- Motherboard support: Micro-ATX, ITX
- CPU cooler max height: \leq 155 mm
- GPU max length: \leq 300mm (with front fan) / \leq 320mm (without front fan)
- Power Supply max length: \leq 165mm (with HDD) / \leq 325mm (without HDD)

- 2.5" Drive Mounts: 2
- 3.5"/2.5" Drive Mounts: 2/2



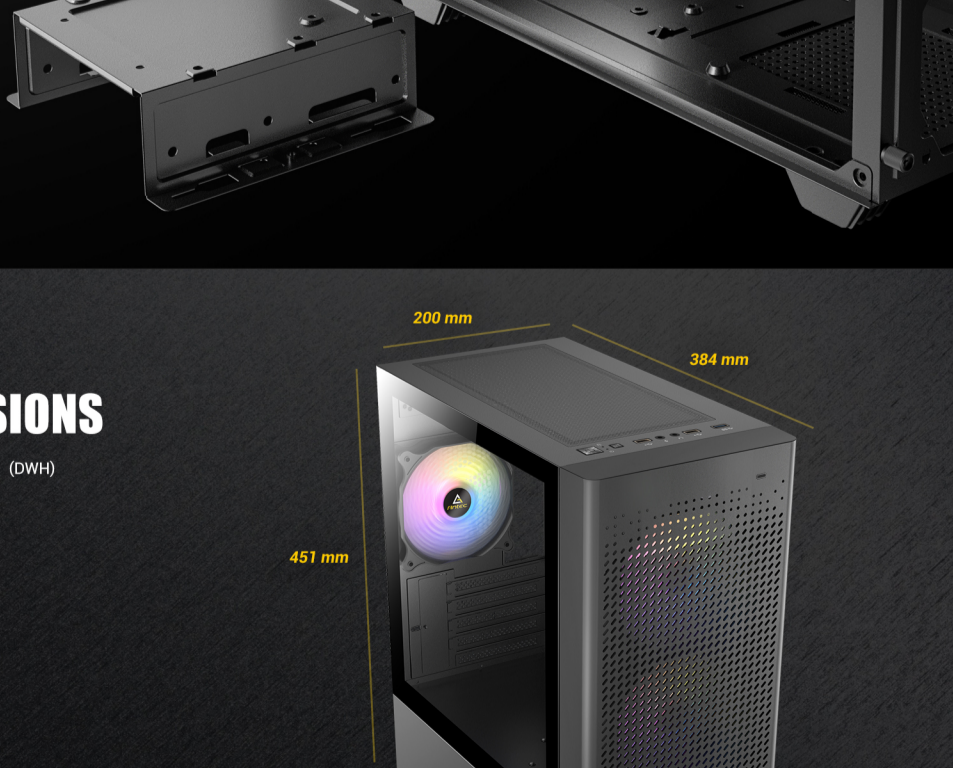
UNLIMITED PERFORMANCE

Max. GPU Length : 320 mm (Fans are installed at the exterior)



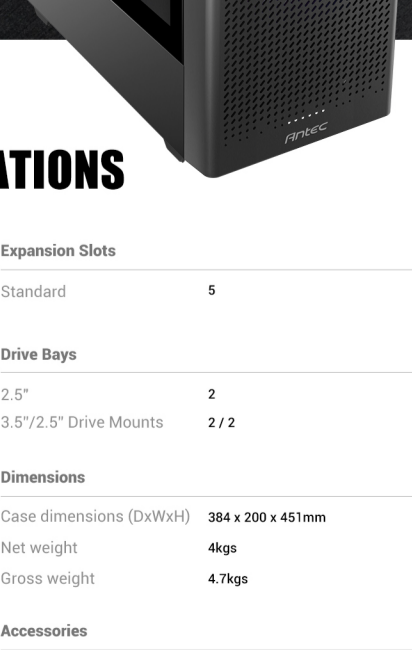
REMOVABLE HDD DRIVE CAGE

The HDD drive cage is removable to increase PSU installation space. With the drive cage installed, the PSU compartment can accommodate PSUs up to 165mm in length. With the drive cage removed, the PSU compartment can accommodate PSUs up to 325mm in length.



DIMENSIONS

384 x 200 x 451 mm (DWH)



SPECIFICATIONS

Main Spec	
Motherboard Support	Micro-ATX, ITX
Form Factor	Mini Tower
Case Material	Steel + Plastic
Side Window Material	Tempered Glass
I/O Ports	Power, LED control button, Type-C 3.2 Gen 2 x 1, USB3.0 x 1, USB2.0 x 2, MIC/HD-AUDIO

Expansion Slots	
Standard	5

Compatibility & Clearances	
CPU Cooler Max Height	\leq 155mm
GPU Max Length	\leq 300mm (with front fan) / \leq 320mm (without front fan)
Power Supply Max Length	\leq 165mm (with HDD) / \leq 325mm (without HDD)
Cable Routing Space	\leq 20mm

Dimensions	
Case dimensions (DxWxH)	384 x 200 x 451mm
Net weight	4kgs
Gross weight	4.7kgs

Fan Support	
Front	3 x 120mm / 2 x 140mm
Top	2 x 120mm / 2 x 140mm
Rear	1 x 120mm

Accessories	
Included Fans	2 x 120mm ARGB fans in front + 1 x 120mm ARGB fan in rear

Radiator Support	
Front	120 / 140 / 240 / 280 / 360 (Length \leq 397mm)mm
Top	120 / 240mm
Rear	Up to 120mm

General	
Dust Filter	Top / Bottom
Warranty	1 year
UPC#	0-761345-81057-9

